

# Gemini

The First Real  
Windows Printers

- **Fast data transfer**
- **First label printout in a second**
- **Now also Windows NT compatible**
- **Including all usual bar codes**
- **Simple operation**

Edition 4



## The Economical Label Printer from cab: Specially Designed for Windows™

Until now the purchase of a label printer required that special software had to be purchased too.

Gemini is the new range of four printers which cab has been developed for use under Windows™. They allow labels to be simply produced using your Windows™ program.

The Gemini series of label printers have their economical field of operation there, where labels in numerous differing designs must be produced fast and flexibly, and in the very best quality. Address, Brochure, Product or Dispatch labels are printed directly alongside the PC on the work desk. Of course cab provides labels and ribbons according to your individual requirements.

The new Gemini series of printers makes the design and printing of labels as easy as writing a letter! All printing functions can be controlled under Windows™ - special software is not required. The powerful printer driver eliminates any delays. Your input will be printed out within seconds, in brilliant quality.

Whether texts, graphics or bar codes – Gemini prints every label within one second. This performance can only be achieved with the high speed parallel interface. So Gemini is a newcomer among all other label printers, nowhere else you will get your first label faster.



Gemini 2 with

### Gemini T/TD

The compact and robustly constructed Gemini printer is equally suitable for the office, and for the production area. Gemini T with a tear-off plate. Gemini TD with additional present function.



### Useful Cutter for the Gemini 2

The cutter is mounted easily, and without the use of any tools. Labels and endless material can be cut off singly at the end of the printing run.



### Powerful Rewinder

Fitted with a powerful winder motor, media rolls of up to 200mm. external diameter can be rewound with the labels facing inwards or outwards as required.





internal rewinder and present sensor

### The Most Important Features of the Gemini Series:

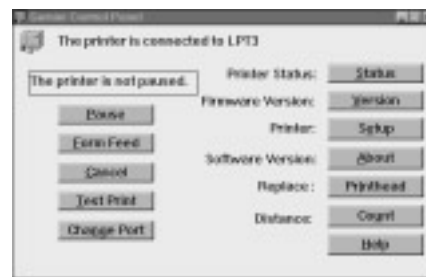
	Gemini T	Gemini TD	Gemini 2	Gemini 2
Part no.	5534100	5534000	5534650	5534500
Print resolution dpi	200	200	200	200
Print speed mm/sec.	70	70	100	100
Label width max. mm	116	116	116	116
Max. diameter of label roll mm	150	150	200	200
Internal rewinder	-	-	-	●
Present sensor	-	●	-	○

● Standard ○ Optional

### Windows™ Printer Driver

All of the Gemini labels printers are supplied with a fast and powerful Windows™ printer driver.

You can print your labels from all usual Windows™ programs, e.g. from word-processing programs (Word, Word-Pad, Write), combination programs (Works, Lotus), data banks (Paradox, dBase, FoxPro, Access) or graphic software (PaintBrush, CorelDraw).



### Bar Codes

Together with the Windows™ printer driver is a complete program of all common bar codes. You can print bar codes fast and effectively.



All Windows™ character fonts can be printed, e.g.:

Bodoni City **STENCIL**  
 Helvetica **Rockwell**  
 Offi **MACHINE** Sen  
 Rounded ❄️⭐️🕒

All character fonts which have been installed under Windows™ can be printed by the Gemini. You have a huge choice of character fonts to choose from.



### Label Software EASYLABEL

For professional use the additional software EASYLABEL is available. Serial numbers can be organized, characters and graphics can be turned, squares and circles can be drawn, databases can be imported, etc.



### Labels to Your Requirements

We can supply many different standard sizes and also produce label stock according to your requirements in a wide range of differing materials.



### Operation and Service

Operation is performed simply and comfortably directly via your PC monitor screen. Help is available at the press of a key. The printer can be tested by using the service menu.

### Transfer Ribbon in all Widths

To ensure a high quality of print, both label stock and transfer ribbons have been developed to be fully compatible. We can offer eight different standard widths in five different qualities.



## Technical Data

Method of Printing  
Thermal/Thermal Transfer

Print Head Thin-film transfer head

Resolution 200 dpi

Print Speed Gemini T/TD up to 70 mm/sec.  
Gemini 2 up to 100 mm/sec.

Print Width up to 104 mm

Character Font Size and Style  
As according to the PC or Windows™  
program installed.

Character Orientation  
All directions supported by Windows™.

Graphics All graphics supported by  
Windows™.

Bar Codes  
Installed as Bitmap fonts:

Codabar EAN/UPC Appendix 5

CODE 39 Interleaved 2/5

CODE 128 A, B, C MSI

EAN 8 PDC 417

EAN 13 Postnet

EAN/UCC 128 UPC A

EAN/UPC Appendix 2 UPC E

Further codes are being prepared.

RAM 256 KB

Interfaces Parallel: Centronics

Transfer Rate 40 KB/sec.

With Fast Print 70 KB/sec.

External connector (Gemini 2)  
Interface for cutter and present sensor

System Settings  
Thermal/Thermal Transfer mode  
Batch mode, Present/Cut  
Label/Endless Material, mm/inch  
Print Normal/Inverted  
Label orientation Portrait/Landscape  
Heat Energy, Present Offset, No. of  
Labels, Fast Print, Print Speed.

Monitor Controlled Functions  
Pause, Form Feed, Cancel,  
Test Print, Port, Distance, Status.

Monitor Screen Reports  
Number of labels still to be printed,  
End of Paper, End of Transfer Ribbon.

Label and Endless Material  
Thermal Paper, Normal Paper, Plastic  
Ribbon: PE, PP, PVC Polyamide

Adhesive Labels/Weight 60 - 160 g/m<sup>2</sup>

Cardboard/Weight up to 180 g/m<sup>2</sup>

Label Height 6 - 300 mm

Print Width Gemini T/TD 25 mm - 116 mm  
Gemini 2 12 mm - 116 mm

Core Diameter 40 mm

Roll Diameter Gemini T/TD up to 150 mm  
Gemini 2 up to 200 mm

Labels wound facing inwards or outwards.

Transfer Ribbon

Length 360 m

Width up to 114 mm

Core Diameter 25 mm

Coated side facing inwards or outwards.

Label Backfeed  
To ensure that each new printing job always  
starts at the top edge of the label; when the  
label is removed in present mode, or after  
cutting or at the end of printing, the label  
stock is slightly withdrawn.

Internal Rewinder (Gemini 2)  
To rewind the backing strip following printing  
in present mode.

Core Diameter 40 mm

Roll Diameter up to 145 mm

Present Sensor (Gemini TD)  
Following removal of a label the next one is  
printed.

Label Sensor  
For horizontal print positioning

Gemini T/TD: See-through sensor:  
Clearance from material edge  
20 mm.

Gemini 2: See-through reflective photocell  
from below.  
Clearance from material edge  
3 - 48 mm, adjustable.

System Check  
End of Paper, End of Ribbon

Dimensions	Height	Width	Depth
Gemini T/TD	225 mm	234 mm	332 mm
Gemini 2	280 mm	250 mm	432 mm

Weight	Gemini T/TD	Gemini 2
	10 kg	13 kg

Working Voltage

Gemini T/TD: 230 or 115 V- optional 50 - 60 Hz

Gemini 2: 230/115 V- switchable 50 - 60 Hz

Temperature Range  
Operational 10 - 35° C. Humidity 10 - 85%

Approvals:

CE: E.G. Protection requirements:  
- Low Voltage Regulations 73/23/EWG)  
- Machine Regulations (89/392/EWG)  
- Electromagnetic Tolerance  
(89/336/EWG as F.93/31/EWG)

FCC: Requirements from part 15 of the  
FCC Rules for Class A computers

Driver Software  
For Windows™ programs from version 3.0, Win-  
dows™ 95 and Windows NT from version 4.0

## Peripherals

Present Sensor  
Following removal of a label the next one is  
printed.

External Rewinder  
Core Diameter 40/76 mm  
Roll Diameter up to 200 mm  
Labels rewound facing inwards or outwards.

Cutter up to 180 g/m<sup>2</sup>  
For labels or endless material, cuts off each  
label individually.

	Gemini T	Gemini TD	Gemini 2	Gemini 2
Part No. 230 V~	5534100	5534000	5534650	5534500
115 V~	5534203	5534201		
Internal Rewinder	—	—	—	●
Present Sensor	—	●	—	○
External Rewinder	○	○	○	○
Cutter	—	—	○	○

● = Standard ○ = Option



cab-Produkttechnik  
Gesellschaft für Com-  
puter- und Automations-  
Bausteine mbH

cab-Produkttechnik GmbH  
Postfach 19 04 D-76007 Karlsruhe  
Haid-und-Neu-Str. 7 D-76131 Karlsruhe  
Germany

Phone ++49 7 21/66 26-00  
Fax ++49 7 21/66 26-249  
<http://www.cabgmbh.com>  
e-mail: [cab\\_GmbH@compuserve.com](mailto:cab_GmbH@compuserve.com)